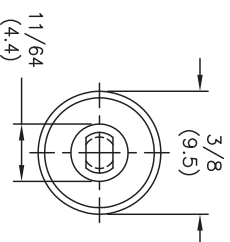
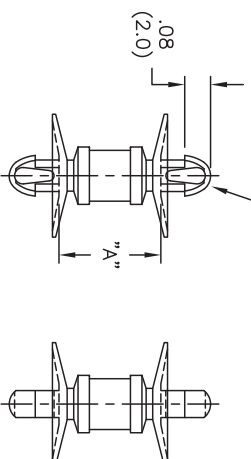


AVAILABLE BY SPECIAL ORDER ONLY

| PART NO. | DIM. "A" |
|---------------|--------------|
| CDLCBST-3-01 | ±.015 (±0.4) |
| CDLCBST-4-01 | 3/16 (4.8) |
| CDLCBST-4-01 | 1/4 (6.4) |
| CDLCBST-5-01 | 5/16 (7.9) |
| CDLCBST-6-01 | 3/8 (9.5) |
| CDLCBST-7-01 | 7/16 (11.1) |
| CDLCBST-8-01 | 1/2 (12.7) |
| CDLCBST-9-01 | 9/16 (14.3) |
| CDLCBST-10-01 | 5/8 (15.9) |



TO SNAP-LOCK IN A .100±.002
(2.54±0.05) DIA. HOLE, IN A
.062 (1.57) THICK BOARD [BOTH ENDS]



- NOTES:
1. MATERIAL: NYLON 6/6 (RMS-01).
 - FLAME RETARDANT, NYLON (RMS-19), AVAILABLE BY SPECIAL ORDER ONLY.
 2. COLOR: NATURAL.

| | | | | | |
|--|---------------|----------------|--|------------|--|
| TITLE: CUPPED DUAL LOCKING CKT.BD. SUPPORT, TEARDROP | | DWG IN IN (MM) | | PRINT TYPE | |
| TOLERANCES UNLESS NOTED | | PART # | | CA | |
| FILE # | CDLCBST | SEE TABLE | | | |
| MAT'L: | SEE NOTES | | | | |
| RE: | RICHCO, INC. | | | | |
| DWN: P.B. | APP: | | | | |
| DT: 06-20-94 | DT: | | | | |
| RICHCO INC. | | | | | |
| PO BOX 804238, CHICAGO, 60680 | | | | | |
| (773) 539-4060 | | | | | |
| SEE ECN #862 FOR CHANGES | SM 10.04.04 | | | | |
| SEE ECN #474 FOR CHANGES | SM 09.30.02 | | | | |
| CHANGED FILE NO. AND TITLE BLOCK. | SM 04.27.01 | | | | |
| MAT'L RMS-19 ADDED | J.L. 12.19.97 | | | | |
| CONVERTED TO ACAD | PB 06.20.94 | | | | |
| DESCRIPTION | ENGR DATE | | | | |
| REV | | | | | |