

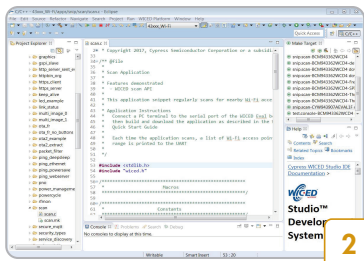
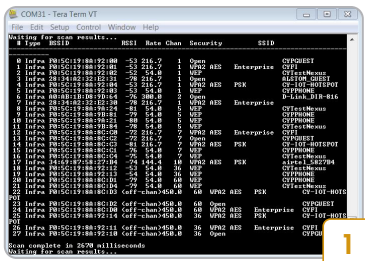
CYW943907AEVALIF EVALUATION KIT



Kit Contents:

- 1 CYW943907AEVALIF Evaluation board
- 2 USB Standard-A to Micro-B cable
- 3 Quick Start Guide (this document)

www.cypress.com/CYW943907AEVALIF



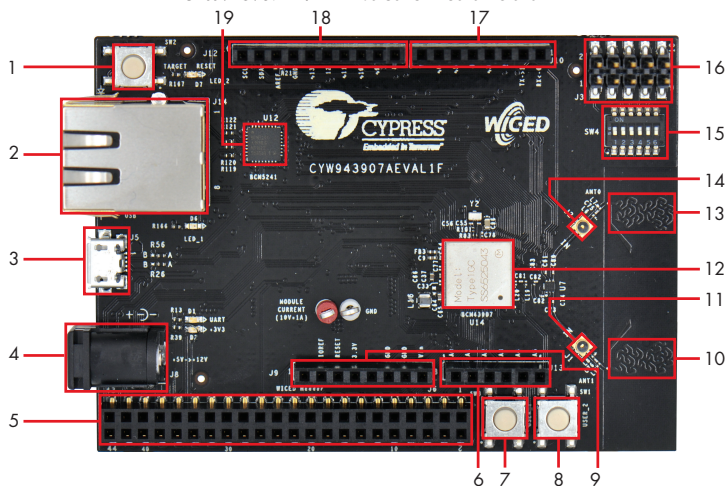
1. Register on Cypress WICED Community and then download and install WICED Studio 5.0 (or later) at www.cypress.com/products/wiced-software.
2. Plug the kit into a USB port on your computer.
3. Open a Serial Terminal Emulator with a baud rate of 115200.
4. Every 5 seconds the kit will scan for Wi-Fi networks.

Note : If drivers do not install automatically, they can be found in the SDK installation folder

1. Download the kit user guide from www.cypress.com/CYW943907AEVALIF.
2. Follow the instructions in the user guide to program the kit, and use the provided examples.
3. The example pre-programmed into the kit is called snip.scan in WICED Studio.

CYW943907AEVAL1F EVALUATION KIT

CYW943907AEVAL1F Evaluation Board Details



- | | |
|--|--|
| 1. Reset Switch SW2 | 10. PCB Antenna - Main ANT1 |
| 2. RJ45 Connector J14 | 11. Connector for External Antenna1 J1 |
| 3. Micro USB (Power, Programming and Debugging) J5 | 12. CYW943907 Type 1GC Module (Murata) |
| 4. 5-12V Power Input (Optional) J8 | 13. PCB Antenna - Diversity ANT0 |
| 5. WICED Header J6 | 14. Connector for External Antenna 0 J2 |
| 6. Arduino Header J13 | 15. On-board programmer and debugger /External JTAG Switch SW4 |
| 7. User Switch 1 SW3 | 16. External JTAG Header J3 |
| 8. User Switch 2 SW1 | 17. Arduino Header J10 |
| 9. Arduino Header J9 | 18. Arduino Header J12 |
| | 19. External PHY Chip (BCM5241) U12 |

For the latest information about this kit, visit www.cypress.com/CYW943907AEVAL1F