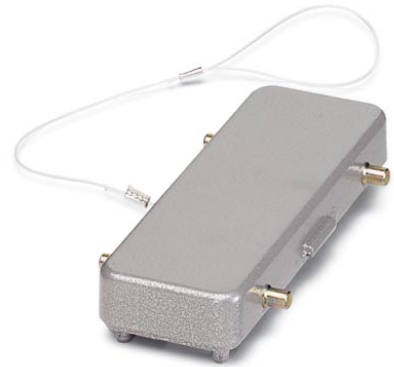



HC-B 24-SD-FQU/FS-AL

Order No.: 1644614

<http://eshop.phoenixcontact.de/phoenix/treeViewClick.do?UID=1644614>

HEAVYCON protective cover, type B24, for supporting base element with double locking latch, with retaining cord, IP65, ALU

Commercial data

GTIN (EAN)	 4 017918 904937
sales group	D093
Pack	10 pcs.
Customs tariff	76169990
Catalog page information	Page 550 (PC-2009)

Product notes

WEEE/RoHS-compliant since:
03/01/2006



<http://www.download.phoenixcontact.com>
Please note that the data given here has been taken from the online catalog. For comprehensive information and data, please refer to the user documentation. The General Terms and Conditions of Use apply to Internet downloads.

Technical data

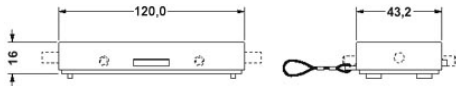
General data

Design	B24
Type	For supporting base element with double locking latch
Locking type	For double locking latch
Degree of protection	IP65
Ambient temperature (operation)	-40 °C ... 125 °C

Material	Aluminum, die-cast
Material, protective cover	Al
Assembly instructions	Not for HC-B...EMC housings
Connection	The guide pins of the protective cover must be removed when using keying sockets, pins, and bolts.

Diagrams/Drawings

Dimensioned drawing



Address

PHOENIX CONTACT Inc., USA
586 Fulling Mill Road
Middletown, PA 17057, USA
Phone (800) 888-7388
Fax (717) 944-1625
<http://www.phoenixcon.com>



© 2010 Phoenix Contact
Technical modifications reserved;