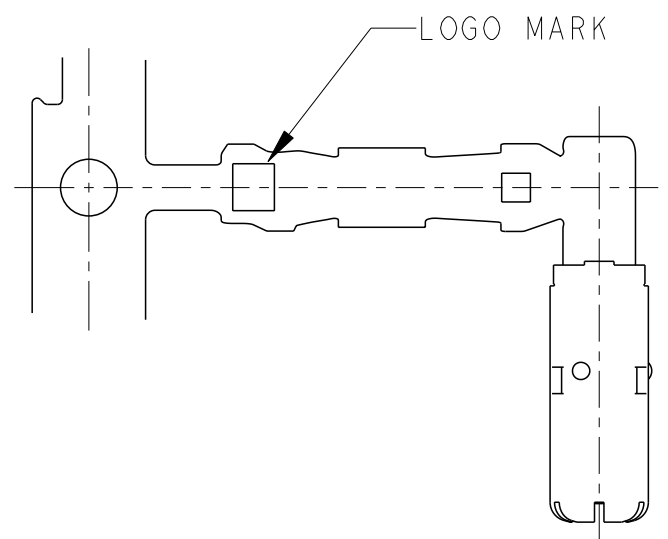
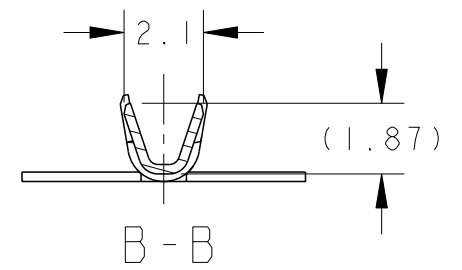
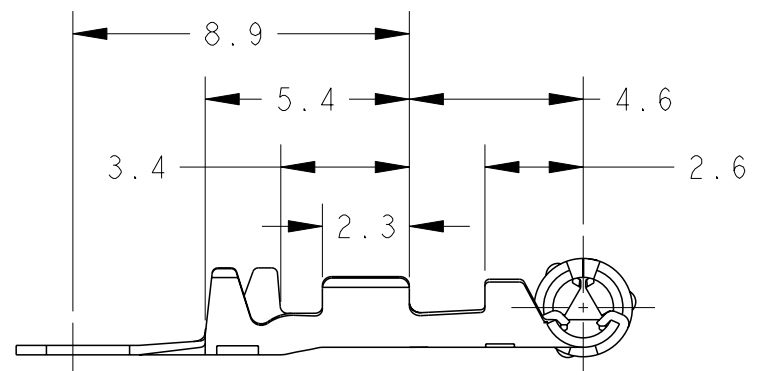
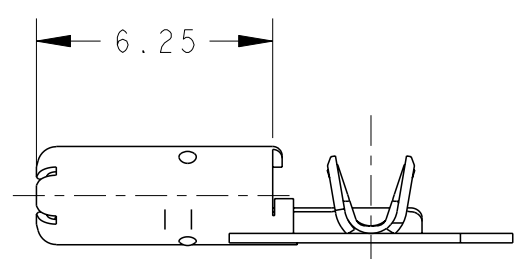
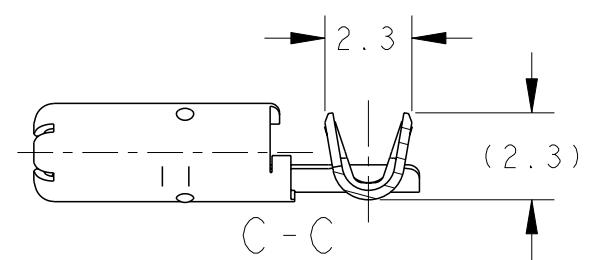
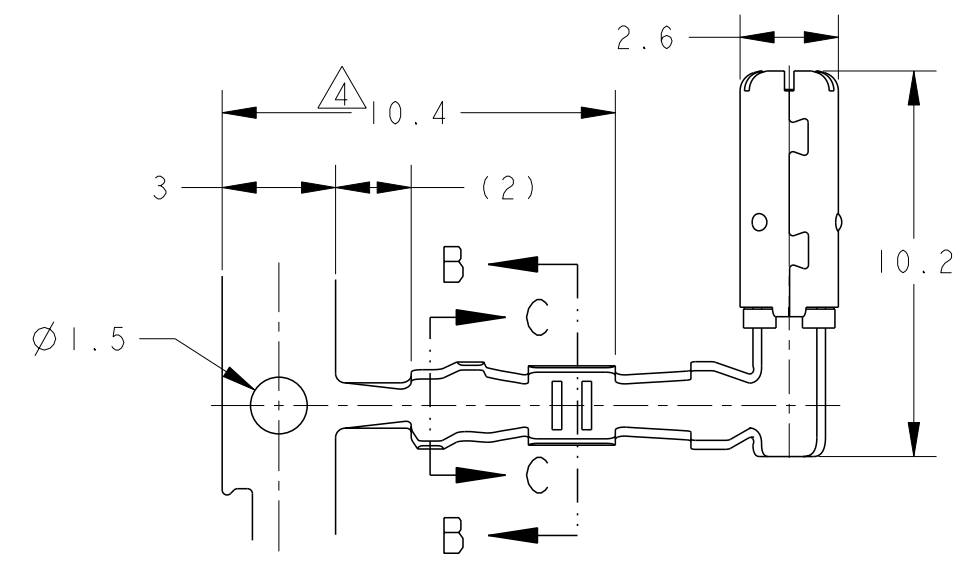


THIS DRAWING IS UNPUBLISHED. RELEASED FOR PUBLICATION 20  
 © COPYRIGHT 20 ALL RIGHTS RESERVED.

LOC	DIST	REVISIONS 変更					
J	-	P	LTR	DESCRIPTION	DATE	DWN	APVD
		0		RELEASED	FJA0-0144-03	28MAR2003	RN HY
		A		REVISED	ECR-10-005857	13MAY10	SF KB
		A1		REVISED	ECR-10-022322	01NOV10	AY TH
		A2		REVISED	ECR-15-011109	13AUG15	AY TH



1. APPLICABLE WIRE RANGE ;  
 AVSS 0.3, 0.5, 0.3f, 0.5mm<sup>2</sup>  
 CAVS 0.3, 0.5mm<sup>2</sup>  
 CHFUS 0.35, 0.50mm<sup>2</sup>  
 HFTUF 2cX0.5mm<sup>2</sup>  
 2. APPLICATION SPEC ; 114-5315  
 3. APPLICATOR FEED ; 18mm  
 △ TIN PLATING AREA
1. 適用電線 :  
 AVSS 0.3, 0.5, 0.3f, 0.5mm<sup>2</sup>  
 CAVS 0.3, 0.5mm<sup>2</sup>  
 CHFUS 0.35, 0.50mm<sup>2</sup>  
 HFTUF 2cX0.5mm<sup>2</sup>  
 2. 取付適用規格 : 114-5315  
 3. アプリケータ送りピッチ : 18mm  
 △すずめっき範囲

SELECTIVE GOLD	1612124-3
FINISH	PART NUMBER

WIRE RANGE 総合電線断面積	0.22-0.56mm <sup>2</sup>	INSULATION DIA 被覆外径	φ0.95-1.7
DWN R. NAGAI 28MAR2003		NAME ImmDIA SOCKET CONTACT	
CHK T. HAYASHI 28MAR2003		CAGE CODE 00779	
APVD H. YAMAGAMI 28MAR2003		DRAWING NO C=1612124	
PRODUCT SPEC 108-5679		RESTRICTED TO -	
APPLICATION SPEC 114-5315		SCALE 5:1	
WEIGHT 0.36 g		SHEET 1 OF 1	
CUSTOMER DRAWING		REV A2	

THIS DRAWING IS A CONTROLLED DOCUMENT.	
DIMENSIONS: 単位: 耗 mm	TOLERANCES UNLESS OTHERWISE SPECIFIED: 一般公差 ±0.2 0-PLC ± 1-PLC ±0.1 2-PLC ±0.01 3-PLC ±0.001 4-PLC ±0.0001 ANGLES ±1'00"
MATERIAL 材料 COPPER Alloy	FINISH 仕上 SELECTIVE GOLD