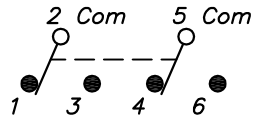


RECOMMENDED P.C.B. LAYOUT

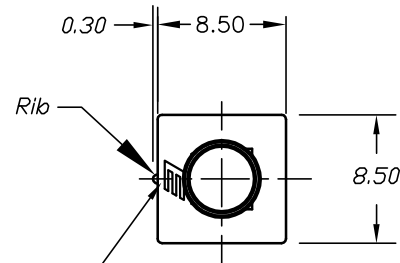


CIRCUIT: 2PDT

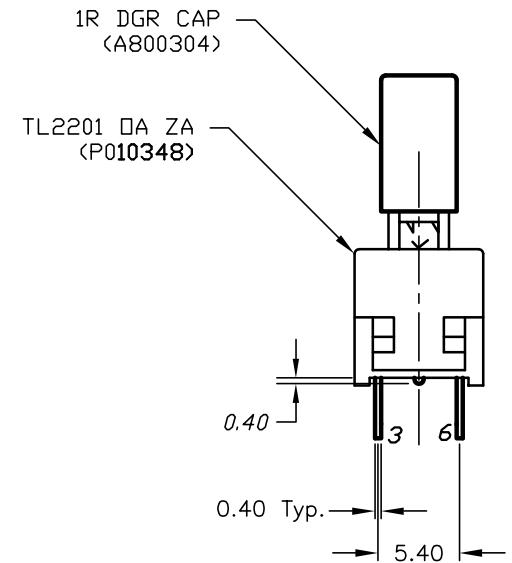
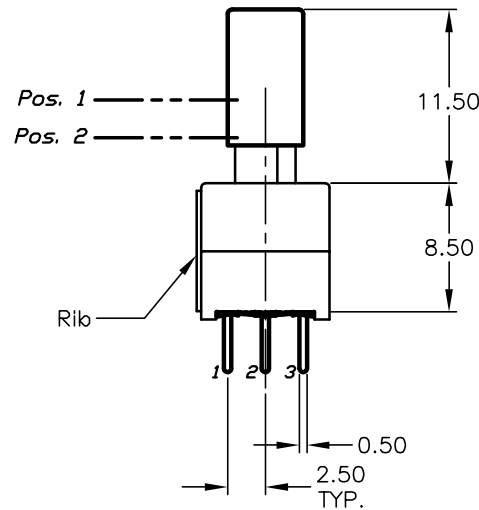
SWITCH FUNCTION		
CONNECTED TERM. #	FUNCTION	
2-1,5-4	NORMALLY CLOSED	POS. 1
2-3,5-6	NORMALLY OPEN	POS. 2
2,5	COMMON	

NOTES:

- ALL DIMENSIONS IN MM
- GENERAL TOLERANCE: X.X=±0.4  
X.XX=±0.25
- TERM. NOS. FOR REF. ONLY
- RATING: 0.1A @30V DC
- TRAVEL: (TO MAKE)= 1.34±0.38  
(TOTAL TRAVEL)= 2.50±0.38  
(TO LATCH)= 1.50±0.38
- OPERATING FORCE:180±50gf
- CONTACT RESISTANCE: 50mILLI-Ohms MAX. Initially
- ELECTRICAL LIFE (at Full Load):  
10,000 Cycles Make & Break
- ▲ 9. DESIGNATE MAJOR FEATURE:



▲ Logo & Rib Location To Be As Shown



**E-SWITCH®**

A	13506	RELEASED FOR PRODUCTION	10/8/03	AR
REV.	ECN No.	DESCRIPTION	DATE	CHKD

THE INFORMATION CONTAINED IN THIS DOCUMENT IS PROPRIETARY TO E-SWITCH AND IS NOT TO BE COPIED OR TRANSFERRED

TITLE				
TL2201 DA Z A /1R DGR (MOMENTARY)				
SCALE	DATE	DR	DWG	REV
2:1	10/8/03	AR	XSP001A	A