

1

2

3

4

5

6

7

A

NOTES:

MATERIAL

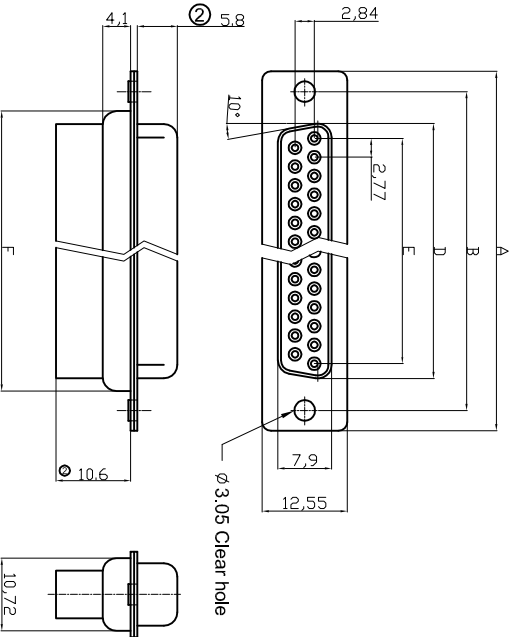
1. Insulator Material: Glass-filled thermoplastic PBT, UL94V-0 rated
2. Contact Material: Brass or Phosphor Bronze
3. Shell : Steel, 100 μ" Tin Over 50μ" min Nickel
4. Clinch Nut: Brass, 100μ" min Nickel Plated
5. Boardlock: Brass, 100μ" min Nickel Plated
6. Screwlock: Brass, 100μ" min Nickel Plated

B

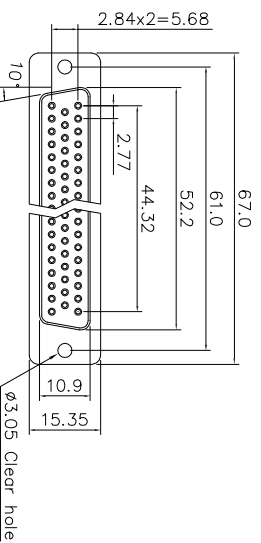
ELECTRICAL

1. Current Rating : 3 AMP
2. Voltage Rating : 250V AC/rms 60Hz
3. Contact Resistance: 20mΩ Max at 1 AMP DC
4. Insulation Resistance: 1000MΩ at 500 VDC
5. Withstand Voltage: 1000V AC/rms 60Hz for 1 minute
6. Operating Temperature: -55°C to +105°C

C



D

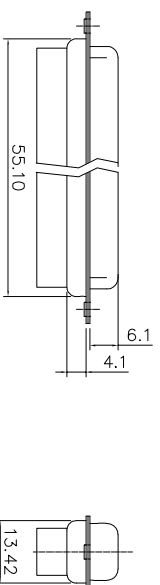


② Dimensions

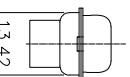
Positions	A	B	D	E	F
09	30.81	24.99	16.33	11.08	19.02
15	39.20	33.30	24.70	19.39	27.70
25	53.05	47.04	38.40	33.24	41.10
37	69.40	63.50	54.80	49.86	57.30

E

F



50 Positions



F

G

RoHS compliant
Unit: mm



File No.: E198287

Scale Free

TOLERANCE

X. ±0.38

X.X ±0.25

X.XX ±0.13

DIM TOL

X. ° ±3°

X.X° ±1.0°

Angle TOL

Customer-No.

Date

Name

ASSMANN WSW-No.

A-DF CR/XX/FZ

Drawing-No.

ASS 1368 CO rev04

Replace

Sheet

G

H

1

2

3

4

5

6

7

ASSMANN
WSW components