

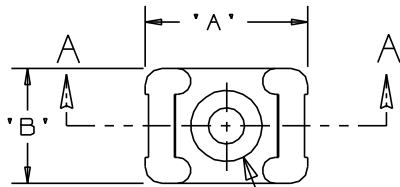
THIS COPY IS PROVIDED ON A RESTRICTED BASIS AND IS NOT TO BE USED IN ANY WAY DETRIMENTAL TO THE INTERESTS OF PANDUIT CORP.

PANDUIT PART NO.*	RECOMMENDED FASTENER	'A'	'B'	'C'	'D'	'E'	'F'	'G' REF'	'H' REF'	'I' REF'	USE WITH THESE CABLE TIE CROSS SECTIONS	WEIGHT (g) lbs/100 pcs.
TM3S8	#8 (M4) SCREW	0.863 (21.9)	0.610 (15.5)	0.373 (9.4)	0.320 (8.1) ±.020 (0.5)	0.088 (2.2) ±.020 (0.5)	0.208 (5.3)	0.105 (2.7)	0.325	0.180	MINIATURE INTERMEDIATE STANDARD LT. HEAVY	0.369 (167.5)
TM3S10	#10 (M5) SCREW							0.115 (2.9)				0.385
TM3S25	1/4" (M6) SCREW	0.879 (22.3)	0.629 (16.0)	0.379 (9.6)			0.210 (5.3)	0.155 (3.9)	0.506	0.262		0.296 (134.5)
TM3S2510	#10 (M5) SCREW	0.873 (22.2)	0.620 (15.7)				0.212 (5.4)	0.120 (3.0)	0.480	0.200		0.321 (145.5)

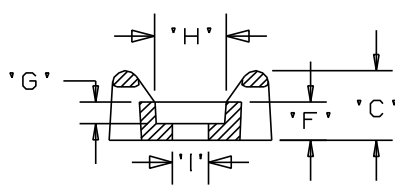
NOTES:

*1. SEE www.panduit.com FOR CURRENT PART NUMBER SUFFIX DESIGNATION AND FOR PACKAGE SIZE AND PART COLOR. SEE www.panduit.com FOR TEFZEL, METAL DETECTABLE AND PEEK MOUNT DRAWINGS.

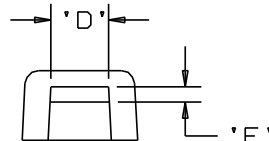
2. HOLE DIMENSIONS SHOULD ACCOMMODATE SPECIFIED RECOMMENDED FASTENER.



SEE NOTE 2



SECTION A - A



DIMENSIONS IN BRACKETS ARE METRIC [mm]

TITLE TM3S - TIE MOUNT		PANDUIT
CUSTOMER DRAWING		
ITEM REVISION NAME 10B015KD/00	MATERIAL: SEE NOTE 1	
DATASET FILE NAME 10B015KD_DC/00 - GB0239EN_REV12		
UNLESS OTHERWISE SPECIFIED, DIMENSIONAL TOLERANCES ARE: IN [mm]		DRAWING NUMBER: GB0239EN
.x ± .1 (2.54) .xxx ± .005 (.127) .xx ± .01 (.25) ANGLES ± 5°		
THIRD ANGLE PROJECTION		SCALE NONE
DRAWN BY AJV		
DATE 12/17/96	CHK	SIZE A
SHT 1 OF 1		

REV	DATE	BY	CHK	APR	DESCRIPTION	ECN
12	6/27/13	BWG	JADE	RTFI	REVISED CHART AND NOTE 1. SEE ECN FOR FULL DETAILS.	GB0239EN/12