

# SERIES R6 SWITCHES

## ROCKER SWITCHES



### FEATURES & BENEFITS

- ▶ Slim-line package design

### APPLICATIONS/MARKETS

- ▶ Audio/Visual
- ▶ Consumer Electronics
- ▶ Test/Instrumentation

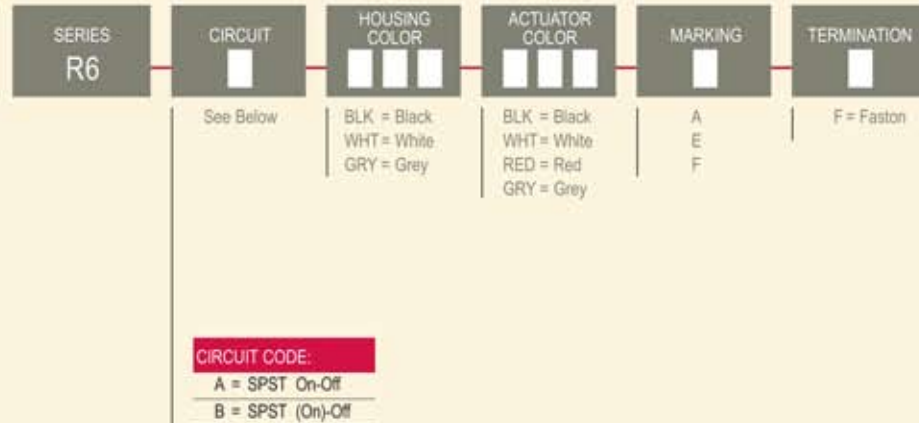
### SPECIFICATIONS

Contact Rating:	10A@125 VAC, 6A@250 VAC (UL, CUL) 4(1)A @250 VAC
Life Expectancy (Mechanical):	50,000 cycles
Life Expectancy (Electrical):	10,000 cycles
Contact Resistance:	<20 mΩ (Initial)
Insulation Resistance:	>1,000MΩ @ 500V DC
Dielectric Strength:	>1,500V AC 1 minute (Initial)
Operating Temp:	-20°C to 65°C

### MATERIALS

Body:	Nylon 6/6 (UL94 V-2)
Rocker:	Nylon 6/6 (UL94 V-2)
Contact Surface:	Coin Silver
Terminal:	Silver plated copper alloy

### HOW TO ORDER



Example Ordering Number  
R6-A-BLK-BLK-E-F

Specifications subject to change without notice.

TACT SWITCHES

NAVIGATION SWITCHES

PUSHBUTTON SWITCHES

TOGGLE SWITCHES

ROCKER SWITCHES

SLIDE SWITCHES

SNAP-ACTION SWITCHES

DIP SWITCHES

KEYLOCK SWITCHES

ROTARY SWITCHES

DETECTOR SWITCHES

CAP OPTIONS



# SERIES R6 SWITCHES

## ROCKER SWITCHES

TACT SWITCHES

NAVIGATION SWITCHES

PUSHBUTTON SWITCHES

TOGGLE SWITCHES

ROCKER SWITCHES

SLIDE SWITCHES

SNAP-ACTION SWITCHES

DIP SWITCHES

KEYLOCK SWITCHES

ROTARY SWITCHES

DETECTOR SWITCHES

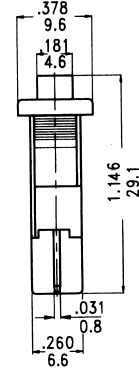
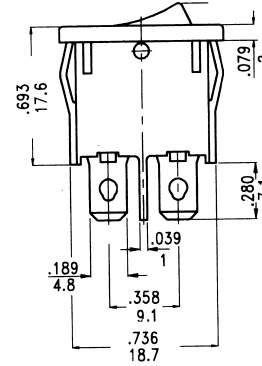
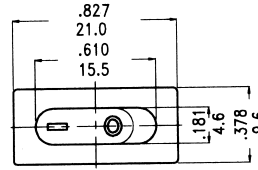
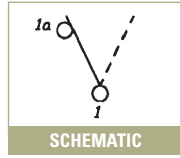
CAP OPTIONS

### SPST



Circuit Code	POS 1	POS 2
A	ON	OFF
B	(ON)	OFF
Term. Comm.	1-1a	OPEN

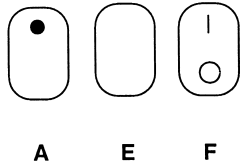
( ) = Momentary



Panel Thickness	X mm (inch)
.75 - 1.25 (.030)-(.049)	19.2±.1 (.756±.004)
1.25 - 2.00 (.049)-(.079)	19.25±.1 (.758 ±.004)
2.00 - 3.00 (.079)-(.118)	19.3±.1 (.760±.004)

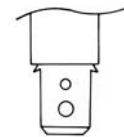
**PANEL MOUNTING**

### MARKING OPTIONS



### TERMINATION OPTIONS

#### F FASTON



0.81 (.032) THK terminals designed for Quick Connect connectors available from AMP Industries, Harrisburg, PA 17105. (Or equivalent).