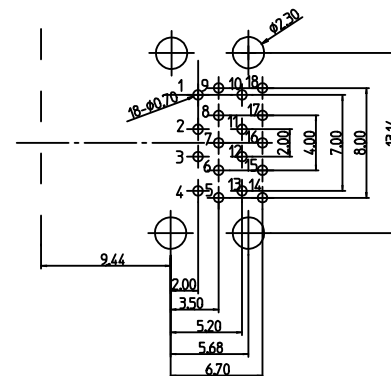
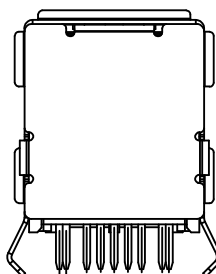
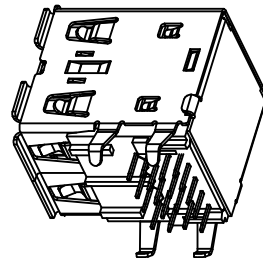
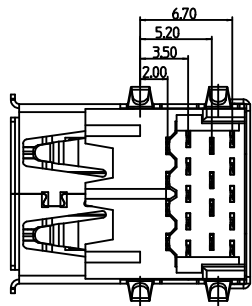
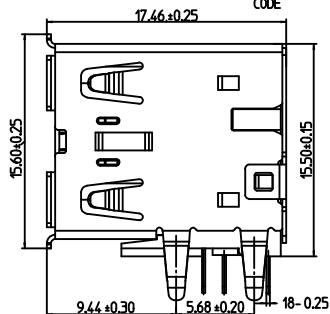
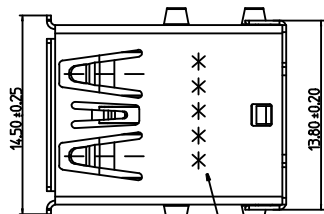
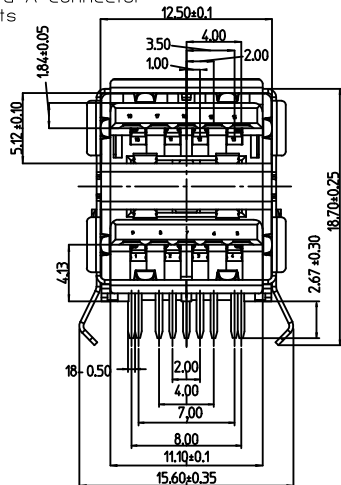


Pin Number	Signal Name	Description
1,10	VBUS	Power
2,11	D-	USB2.0 differential pair
3,12	D+	
4,13	GND	Ground for power return
5,14	StdA_SSRX-	SuperSpeed receiver differential pair
6,15	StdA_SSRX+	
7,16	GND_DRAIN	Ground for signal return
8,17	StdA_SSTX-	SuperSpeed transmitter differential pair
9,18	StdA_SSTX+	
Shield	Shield	Connector metal shell

USB3.0 Standard-A Connector
Pin Assignments



RECOMMEND P.C.B LAYOUT(THICKNESS=1.2mm)
(COMPONENT SIDE) TOLERANCE=0.05

NOTES:
1 MATERIAL:
HOUSING: THERMOPLASTIC, GLASS FIBER FILLED,
HALOGEN FREE, UL94-HB, COLOR: BLUE.
COVER: THERMOPLASTIC, GLASS FIBER FILLED,
HALOGEN FREE, UL94-HB, COLOR: BLUE.
USB2.0 CONTACT/SHORT PIN/LONG PIN: COPPER ALLOY.
USB3.0 CONTACT/SHORT PIN/LONG PIN: COPPER ALLOY.
SHELL: STAINLESS STEEL.
IN CLIP SHELL: STAINLESS STEEL.
BACK SHELL: SPCC
2 FINISH:
CONTACT:
SELECTIVE GOLD(Au) IN CONTACT AREA(SEE TABLE)
SELECTIVE MATTE TIN(Sn) ALLOY IN SOLDER TAIL AREA
THICKNESS=120 MICRONCH MINIMUM.
NICKEL(Ni) OVERALL THICKNESS=80 MICRONCH MINIMUM.
SHELL:
NICKEL(Ni) OVERALL THICKNESS=30 MICRONCH MINIMUM.
BACK SHELL:
NICKEL(Ni) OVERALL THICKNESS=80 MICRONCH MINIMUM.
3. PRODUCT SPECIFICATION REFERS TO PS-48406-001
4. PACKAGE SPECIFICATION REFERS TO PK-48406-001
5. TEST SUMMARY REFERS TO TS-48406-001
6. LEAD FREE AND RoHS COMPLIANT PRODUCT.
7. DATE CODE: X X X X X
YEAR WEEK DAY

TABLE

PLATING	MOLEX P/N
30u" Au	48406-0001
2u" Au & 30u" Pd-Ni	48406-0002
15u" Au	48406-0003
GOLD FLASH(3u" Au MIN.)	48406-0004

REV	DESCRIPTION	QUALITY SYMBOLS	GENERAL TOLERANCES (UNLESS SPECIFIED)		DIMENSION STYLE		SCALE 1:1	DESIGN UNITS	THIRD ANGLE PROJECTION
			mm	INCH	DRAWN BY	DATE			
A	RELEASE EC NO: DRWN: FYANG05 2013/10/20 CHKD: APPR:	▽=0 ▽=0 ▽=0	4 PLACES ±	±	RUBY	2013.9.22	TITLE USB 3.0 CONNECTOR A	DOCUMENT NO. SD-48406-001	SHEET NO. 1 OF 1
			3 PLACES ±	±	CHECKED BY FYANG	2013.9.22	RECEPTACLE DOUBLE 90° DIP TYPE(H=4.13)		
			2 PLACES ±	0.20	APPROVED BY RZHANG	2013.9.22	MOLEX MOLEX INCORPORATED		
			1 PLACE ±	0.25	MATERIAL NO.		SEE TABLE		
			ANGULAR ± °		DRAFT WHERE APPLICABLE MUST REMAIN WITHIN DIMENSIONS		THIS DRAWING CONTAINS INFORMATION THAT IS PROPRIETARY TO MOLEX INCORPORATED AND SHOULD NOT BE USED WITHOUT WRITTEN PERMISSION		