

NOTE

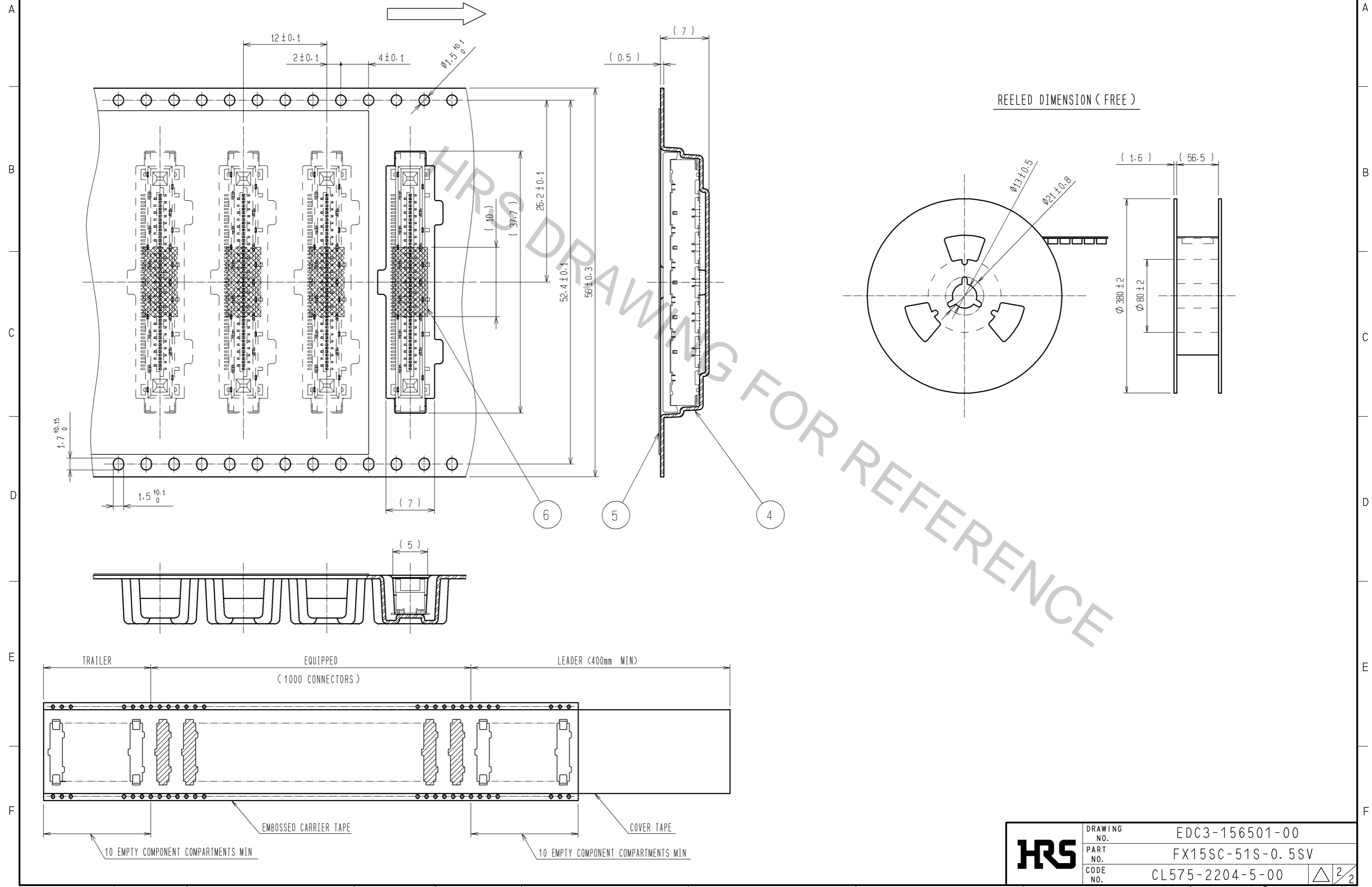
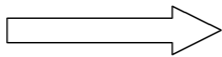
- 1 LEAD CO-PLANARITY OF THIS PRODUCT TO BE 0.1MAX.
- 2 AREA OF INNER SMT LAND REQUIRES PATTERN PROHIBITION OR RESIST TREATMENT TO PREVENT THE PATTERN TOUCHING TO THE CONTACTS.
- 3 PACKAGING FOR THIS PRODUCT APPLIES EMBOSSED CARRIER TAPE PACKAGING. SEE SHEET 2/2 FOR DETAILS.
- 4 FINE SCRATCHES COULD BE FOUND ON THE SURFACE OF REF. ②GROUND PLATE, WHICH DOES NOT AFFECT THE PERFORMANCE.

3	COPPER ALLOY	CONTACT AREA: GOLD 0.1μm min.	6	PI	(TAPE FOR VACUUM PICKUP)			
		LEAD AREA: TIN PLATING 1μm min.						
		UNDER PLATING: NICKEL 0.5μm min.						
2	STAINLESS STEEL	TIN PLATING	5	PE	(COVER TAPE)			
1	PA	BLACK UL94V-0	4	PS	(EMBOSSED CARRIER TAPE)			
NO.	MATERIAL	FINISH . REMARKS	NO.	MATERIAL	FINISH . REMARKS			
UNITS mm			SCALE 4 : 1	COUNT	DESCRIPTION OF REVISIONS	DESIGNED	CHECKED	DATE
<b>HRS</b> HIROSE ELECTRIC CO., LTD.		APPROVED : HS. OKAWA 08.07.30	DRAWING NO. EDC3-156501-00					
		CHECED : HT. YAMAGUCHI 08.07.30	PART NO. FX15SC-51S-0.5SV					
		DESIGNED : SY. KAMIGA 08.07.30	CODE NO. CL575-2204-5-00					
		DRAWN : HK. SUNADORI 08.07.30						

Apr.1.2017 Copyright 2017 HIROSE ELECTRIC CO., LTD. All Rights Reserved.

# SPECIFICATION DRAWING OF PACKING (2 : 1)

THE DIRECTION OF PULLING OUT



REELED DIMENSION (FREE)

<b>HRS</b>	DRAWING NO.	EDC3-156501-00	$\triangle 2/2$
	PART NO.	FX15SC-51S-0.5SV	
	CODE NO.	CL575-2204-5-00	