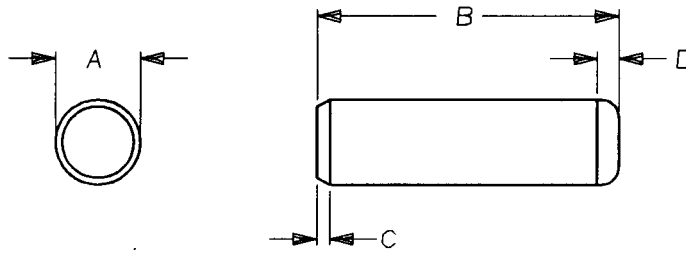


1. PART NUMBER AND CHARACTERISTICS



SEE ALSO 2030423 AND 2168312

TE Part No	Rev	A	B	C	D
992946-1	O	6	16	0.9	2.1
992946-2	O	3	16	0.45	1.1
992946-3	O	6	20	0.9	2.1
992946-4	O	6	45	0.9	2.1
992946-5	O	8	28	1.2	2.6
992946-6	O	4	10	0.6	1.4
992946-7	O	8	20	1.2	2.6
992946-8	O	8	24	1.2	2.6
992946-9	O	4	20	0.6	1.4
1-992946-0	O	6	30	0.9	2.1
1-992946-1	O	5	10	0.75	1.7
1-992946-2	O	6	14	0.9	2.1
1-992946-3	A	8	12	1.2	2.6
1-992946-4	A	3	8	0.45	1.1
1-992946-5	A	3	10	0.45	1.1
1-992946-6	B	6	28	0.9	2.1
1-992946-7	B	2	8	0.3	0.78
1-992946-8	B	2	18	0.3	0.78
1-992946-9	B	4	16	0.6	1.4
2-992946-0	B	5	12	0.75	1.7
2-992946-1	C	6	12	0.9	2.1
2-992946-2	D	10	35	1.5	3
2-992946-3	E	3	20	0.45	1.1
2-992946-4	E	3	24	0.45	1.1
2-992946-5	E	3	28	0.45	1.1

**COMMERCIALLY
PURCHASED PRODUCT
SPECIFICATION**

LOC B	MATERIAL High Grade Alloy Steel	FINISH -----
-----------------	------------------------------------	-----------------

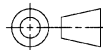


©2011 Tyco Electronics Corporation,
a TE Connectivity Ltd. Company
All Rights Reserved

DIMENSIONS IN
mm

TITLE

PIN, DOWEL, METRIC



SHEET
1 OF 3

NO

992946

REV
AK

AK	Add new reference drawing	JNB	07JUN11
REV	ENGINEERING CHANGE	CHK	DATE

1. PART NUMBER AND CHARACTERISTICS (Continued)

TE Part No	Rev	A	B	C	D
2-992946-6	E	10	25	1.5	3
2-992946-7	F	3	60	0.45	1.1
2-992946-8	G	3	6	0.45	1.1
2-992946-9	G	5	32	0.75	1.7
3-992946-0	H	3	14	0.45	1.1
3-992946-1	H	2.5	12	0.4	0.95
3-992946-2	J	5	16	0.75	1.7
3-992946-3	K	8	16	1.2	2.6
3-992946-4	L	5	40	0.75	1.7
3-992946-5	M	1.5	20	0.23	0.62
3-992946-6	N	4	6	0.6	1.4
3-992946-7	P	5	28	0.75	1.7
3-992946-8	R	8	34	1.2	2.6
3-992946-9	S	2	12	0.3	0.78
4-992946-0	T	5	22	0.75	1.7
4-992946-1	U	10	50	1.5	3
4-992946-2	V	8	120	1.2	2.6
4-992946-3	V	2.5	24	0.4	0.95
4-992946-4	W	10	18	1.5	3
4-992946-5	Y	5	18	0.75	1.7
4-992946-6	Z	1.5	8	0.23	0.62
4-992946-7	Z	1.5	10	0.23	0.62
4-992946-8	AB	2	6	0.3	0.78
4-992946-9	AC	1.5	6	0.23	0.62
5-992946-0	AD	4	40	0.6	1.4
5-992946-1	AE	2.5	16	0.4	0.95
5-992946-2	AF	2	10	0.3	0.78
5-992946-3	AG	Superseded by 4-992946-9			
5-992946-4	AG	Superseded by 4-992946-6			
5-992946-5	AG	Superseded by 4-992946-7			
5-992946-6	AG	1.5	12	0.23	0.62
5-992946-7	AG	1.5	14	0.23	0.62
5-992946-8	AG	2	14	0.3	0.78
5-992946-9	AG	2	16	0.3	0.78
6-992946-0	AG	2	20	0.3	0.78
6-992946-1	AG	2	24	0.3	0.78
6-992946-2	AG	2	30	0.3	0.78
6-992946-3	AG	2	32	0.3	0.78
6-992946-4	AG	2.5	6	0.4	0.95
6-992946-5	AG	2.5	8	0.4	0.95



1. PART NUMBER AND CHARACTERISTICS (Continued)

TE Part No	Rev	A	B	C	D
6-992946-6	AG	2.5	10	0.4	0.95
6-992946-7	AG	2.5	18	0.4	0.95
6-992946-8	AG	2.5	20	0.4	0.95
6-992946-9	AG	2.5	22	0.4	0.95
7-992946-0	AG	2.5	30	0.4	0.95
7-992946-1	AG	3	12	0.45	1.1
7-992946-2	AG	3	18	0.45	1.1
7-992946-3	AG	3	22	0.45	1.1
7-992946-4	AG	3	26	0.45	1.1
7-992946-5	AG	3	30	0.45	1.1
7-992946-6	AG	3	32	0.45	1.1
7-992946-7	AG	3	36	0.45	1.1
7-992946-8	AG	3	40	0.45	1.1
7-992946-9	AG	3	50	0.45	1.1
8-992946-0	AG	4	8	0.6	1.4
8-992946-1	AG	4	12	0.6	1.4
8-992946-2	AG	4	14	0.6	1.4
8-992946-3	AG	4	18	0.6	1.4
8-992946-4	AG	4	22	0.6	1.4
8-992946-5	AG	4	24	0.6	1.4
8-992946-6	AG	4	26	0.6	1.4
8-992946-7	AG	4	28	0.6	1.4
8-992946-8	AG	4	30	0.6	1.4
8-992946-9	AG	4	32	0.6	1.4
9-992946-0	AG	4	36	0.6	1.4
9-992946-1	AG	4	50	0.6	1.4
9-992946-2	AG	5	8	0.75	1.7
9-992946-3	AG	5	14	0.75	1.7
9-992946-4	AG	5	20	0.75	1.7
9-992946-5	AG	5	24	0.75	1.7
9-992946-6	AG	5	26	0.75	1.7
9-992946-7	AG	5	30	0.75	1.7
9-992946-8	AG	5	36	0.75	1.7
9-992946-9	AG	5	45	0.75	1.7

- 1.1. Hardness: Rockwell C60 min (surface)
Rockwell C50-58 (core)
- 1.2. Shall comply with ISO 8734 (DIN 6325 m6)
- 1.3. Surface texture: 0.2 micrometer max
- 2. MANUFACTURER
None

